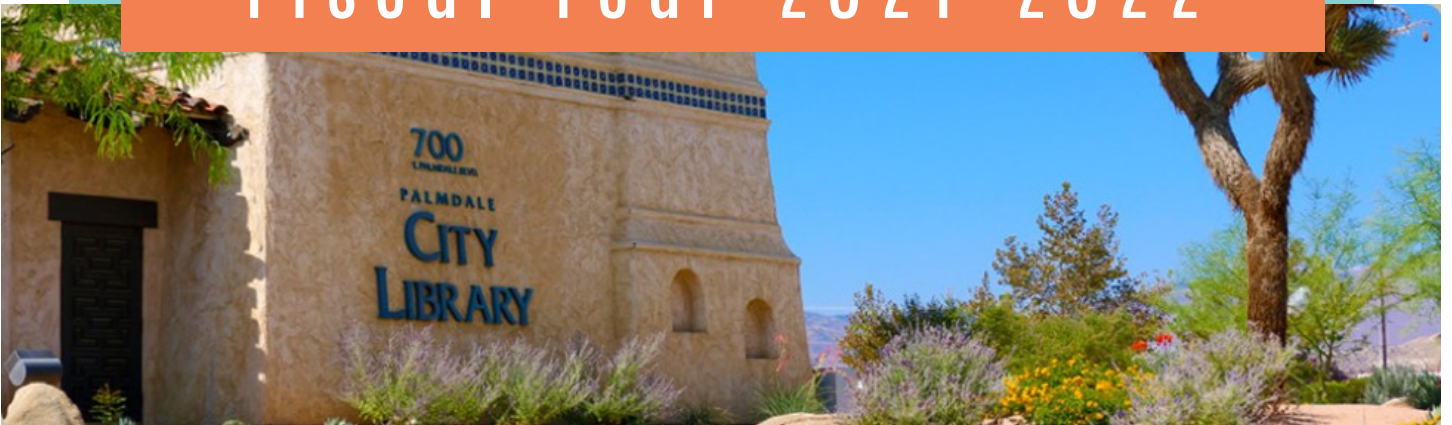




PALMDALE  
CITY LIBRARY

# Annual Report

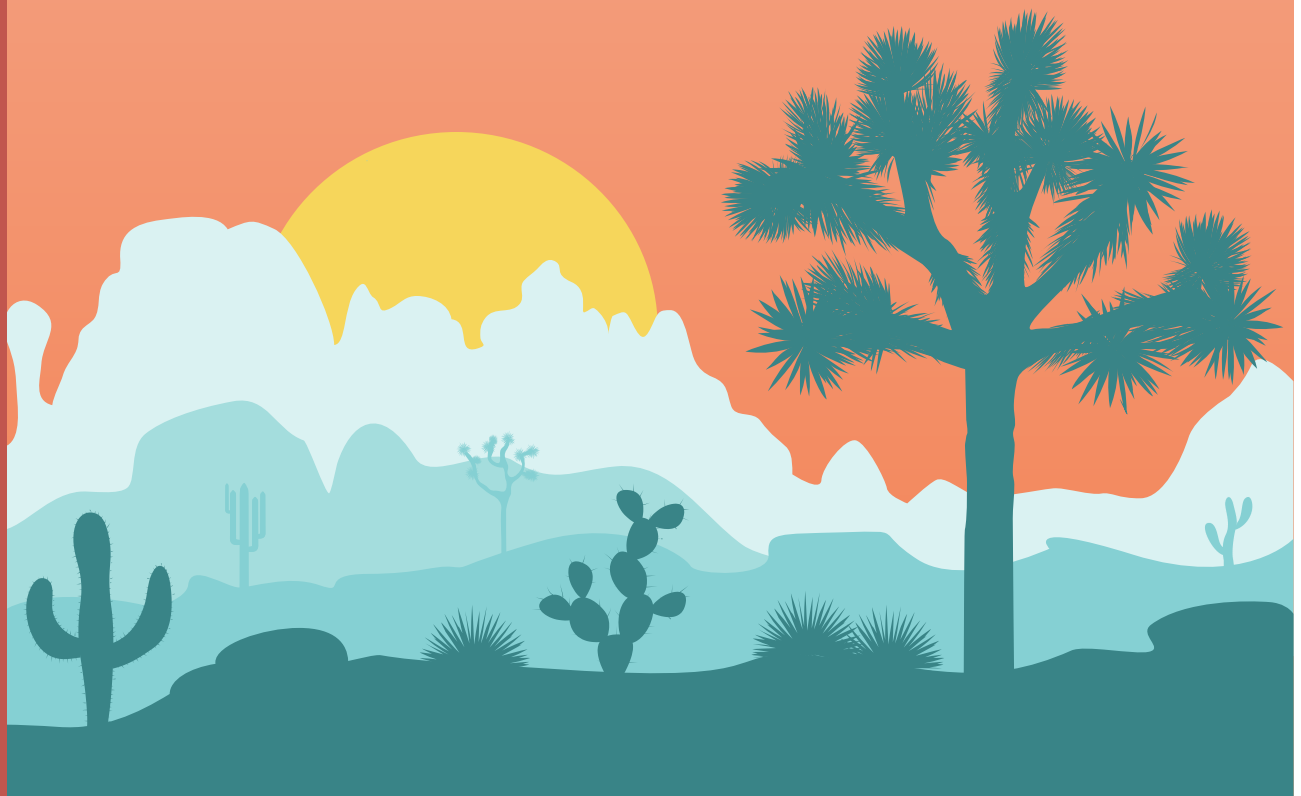
Fiscal Year 2021-2022



700 E Palmdale Boulevard Palmdale, CA 93550 | 661-267-5600

# Table of CONTENTS

Letter From the Library Director.....	3
Launching a New Strategic Plan.....	4
Events and Activities.....	5
Library Statistics.....	11



# Letter from the Library Director

## Palmdale City Library is a small library that does big things.

Dedicated staff members, a passionate and engaged Library Board of Trustees and an effective, supportive City leadership team work together to create a vibrant library at the heart of our community. All are excited about what the Library has to offer.

The past fiscal year has seen a full return to post-pandemic services, an updated strategic plan and several new initiatives. Popular services and activities included one-on-one meetings between community members, patron technology/Wi-Fi use for work, school and entertainment, wireless printing, program and event attendance and of course, the collection of materials available both in the Library and through the Inland Library Network.

In addition to the return of in-person programs and events during the past year, the Library also offered pop-up programs through the Palmdale community. We are excited to reconnect with friends and neighbors as we resume our regular calendar of activities.

We are grateful for Palmdale's support this and every year. It has been a proactive and productive year for Palmdale City Library, with even more to come!

**Robert Shupe | Library Director**



# Launching a New Strategic Plan

After significant public engagement including multiple focus group meetings with stakeholders and a community-wide survey, an ambitious and exciting strategic plan was formally presented and accepted by the Library Board of Trustees in September 2021. This document guides planning for all Library services, with regular progress reports provided to the Library Board of Trustees each month.



## Education

Palmdale City Library (PCL) meets the educational needs of the community.



## Strong Community

PCL brings the community together through intentional inclusiveness in services and programming.



## Reading

PCL celebrates reading, focusing on literacy for all ages.

# Events & Activities

## Summer Reading Program



Patrons were thrilled to return for the Summer Reading Program. Following the theme “Read Beyond the Beaten Path,” a family kick-off event was held in Poncitlán Square Park on June 4th and drew 40 attendees. Summer highlights included Storytime in the Park on June 23rd with 25 attendees and 350 participants attending a Harry Potter Birthday Party to mark the end of Summer Reading on July 29th.



### *Read Beyond the Beaten Path*

HERE'S HOW MUCH THE PALMDALE CITY LIBRARY READ THIS SUMMER:

**382  
Summer  
Readers**

**570  
Books  
Read**

**128,712  
Minutes  
Read**

**2,320  
Badges  
Earned**

**147  
Challenges  
Completed**

**1,621  
Rewards  
Collected**

**Well done,  
Palmdale, and  
keep reading!**

[www.cityofpalmdale.org/library](http://www.cityofpalmdale.org/library)





## Summer Lunch Program



The Library continued its partnership with Palmdale School District and their Summer Lunch Program for the fifth consecutive year. This summer, children enjoyed nutritious lunches in six different City parks, and the Library provided 12 pop-up library programs. With the help of a \$12,800 grant from the State Library, PCL distributed free books from Scholastic to participants.

## Storytime

In addition to being one of the first libraries in Los Angeles County to reopen and restore full hours following pandemic lockdowns, Palmdale was also one of the first to reintroduce in-person Storytime sessions in September, 2021. The sessions have continued with strong attendance, and families are thrilled to be back! A total of 79 Storytime sessions saw 1,315 attendees during the year.



# 79

STORYTIME  
SESSIONS

# 1,315

ATTENDEES

## Relaunch of 1000 Books Before Kindergarten

Members of the Youth Services Team have worked diligently to rebrand and relaunch the program with exciting results! Funded primarily by the Friends of Palmdale City Library, participation in the 1000 Books Before Kindergarten program has steadily increased:

2017 **25**  
PARTICIPANTS

2018 **96**  
PARTICIPANTS

2019 **59**  
PARTICIPANTS

2020 **7**  
PARTICIPANTS

2021 **46**  
PARTICIPANTS

THROUGH  
AUGUST 31<sup>ST</sup>  
2022 **81**  
PARTICIPANTS

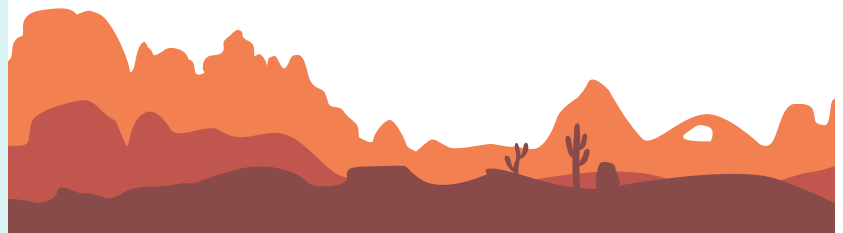
## Storytime to Go Kits

The Library now offers Storytime to Go Kits. Borrowed 80 times during the past year, each kit is based on a different theme and includes books, songs, coloring sheets and simple craft supplies for families.




Themes for the kits include:

- Beach & Ocean
- Cats
- Dinosaurs
- Farm
- Mindfulness
- Monsters
- Enchantment/Encantamiento (bilingual)






## Black History Month and Author Series





**Calling Young Readers!**

**PALMDALE CITY LIBRARY  
AUTHOR SERIES**

 **February 10th 4-5pm**

Michelle Harrison, Founder of HoneyInk Books and author of "A Beautiful Morning"

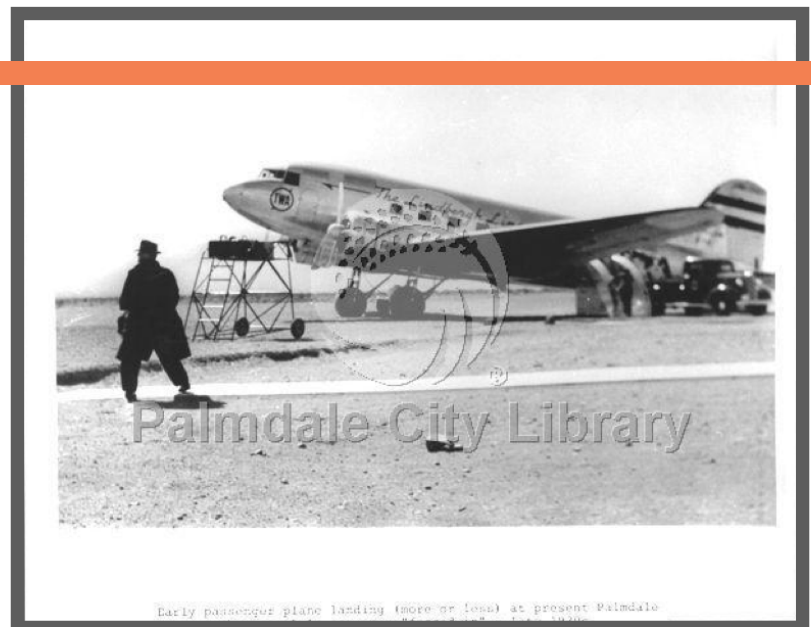
Join us for a read-along, writing workshop, and book signing. Check out our Facebook page for virtual options.

 700 East Palmdale Blvd, Palmdale, CA 93550  
661-267-5600 / [www.cityofpalmdale.org/library](http://www.cityofpalmdale.org/library) 

During February, the Library partnered with the City of Palmdale and the Black Chamber of Commerce of the Antelope Valley to feature two local African-American authors. Well received with over 20 attendees at each event, the author series inspired subsequent author presentations.


## Local History Room Collection Assessment

With special funding provided by the City of Palmdale, a professional preservation consultant conducted an assessment of the Library's Local History Room collection and its environment. The consultant made recommendations regarding the future management, housing and potential expansion of this collection. A site visit was conducted in May 2022, and the final report was received at the end of June. Plans for implementation of recommendations contained in the report have begun.






## Homework Help Centers Service Launched



PALMDALE  
CITY LIBRARY

**Coming Soon...**

**Homework  
Help  
Center**



**When:**  
Mondays through Thursdays  
from 2:30pm to 5pm

**Where:**  
Marie Kerr Park - Youth Room  
39700 30th St W, Palmdale, CA  
93551

Palmdale Oasis Park Recreation  
Center - Youth Room  
3850 E Ave S, Palmdale, CA 93550

Palmdale City Library - Activity  
Room  
700 E Palmdale Blvd, Palmdale  
CA 93550

***Reserve a Spot!  
Free  
Registration  
begins March 7  
on  
Eventbrite.com!***

***Ages 8-14***

For further details, call us at 661-267-5600 or visit us at  
<https://www.cityofpalmdale.org/318/Palmdale-City-Library>

With supplemental funding from the City of Palmdale, the Library piloted three Homework Help Centers throughout the City at the Palmdale City Library, Oasis Park Recreation Center and Marie Kerr Park Recreation Center during after-school hours each Monday-Thursday. The new service launched in March 2022 and will continue this school year with City funding support.

## Inkwell: Palmdale's Book and Art Festival



The Library and Legacy Commons (the City's Senior Center) were thrilled to bring Inkwell back in person in May. This year, the Library introduced an Authors Reception on the eve of the Festival, attended by over 50 people. The Festival reached pre-pandemic participation with over 500 attendees.

## Feature Films in the Library

During the past year, 209 attendees enjoyed 22 movies. Screenings included a Holiday Film Festival in December, Black History Month features in February and Friday afternoon movies during the summer.

**209**  
ATTENDEES

**22**  
MOVIES

## State Park Passes for Check-Out



In collaboration with the State Library of California and the State Parks Division, the Library now offers free day-use passes to State Parks.

# Library Usage Statistics



**37,321**  
VISITORS



**10,069**  
REFERENCE  
QUESTIONS



**3,155**  
CARDS ISSUED



**11,422**  
PUBLIC COMPUTER  
SESSIONS



**15,708**  
WI-FI SESSIONS



**157**  
TOTAL PROGRAMS



**5,744**  
TOTAL PROGRAM  
ATTENDANCE



**99**  
YOUTH PROGRAMS



**2,427**  
ATTENDANCE,  
YOUTH PROGRAMS



**28**  
ADULT  
PROGRAMS



**888**  
ATTENDANCE,  
ADULT PROGRAMS



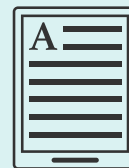
**15**  
KNOW MOBILE /  
OUTREACH EVENTS



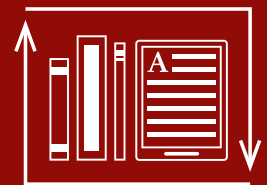
**14,675**  
KNOW MOBILE  
/ OUTREACH  
ATTENDANCE



**135,390**  
CIRCULATION  
PRINT



**9,017**  
CIRCULATION  
E-MATERIAL



**144,407**  
TOTAL  
CIRCULATION